

Installation and wiring for a Lift Chair Recliner

Option: Motorized Headrest and / or lumbar

1-Take the bag that contains the connecting items which you will find inside the back behind the furniture.



2-Install the back.

Headrest Option only: One connection

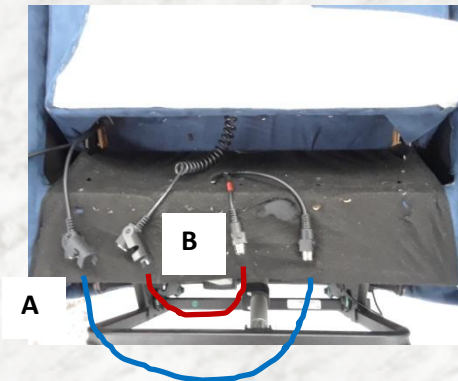
Raise the board, Plug the two wires together.



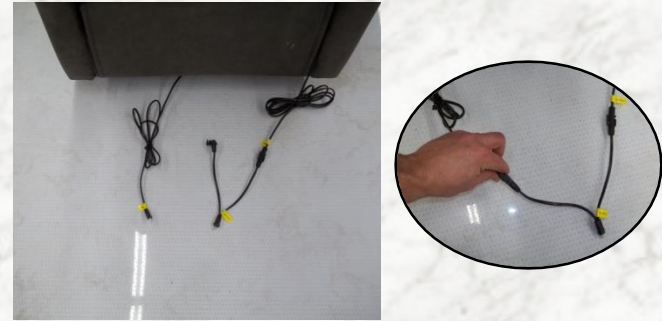
Headrest and Lumbar Option: Two connections

A-Back wire

B-Control wire



3-Plug according to the following pictures



4-A & B: Plug the wires to the transformer
(contained in plastic bag).



Option: Motorized Headrest and / or lumbar-next page

OPTION Headrest

To recline, push the front button.



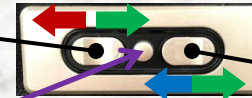
To close, push the rear button.



Headrest

OPTION Headrest & Lumbar

To recline, push the front button.



To close, push the rear button.



Mechanism

Home button; closes the mechanisms simultaneously (head & lumbar).

1-motor system

Lift chair and / or Close back and footrest



Lower chair and / or recline back and open footrest.

2-motors system

Lower chair.



Lift chair.



Lower back.



Close back.



Open footrest.



Close footrest.



For your safety

- *Do not try to close the footrest if someone or something is under it.
- *Do not try to get out of the recliner if the footrest is open.
- *Do not let children use the recliner without supervision.
- *Unplug the transformer when the furniture is not in use.
- *Follow the instructions carefully and always plug into wall or in battery at the last step.